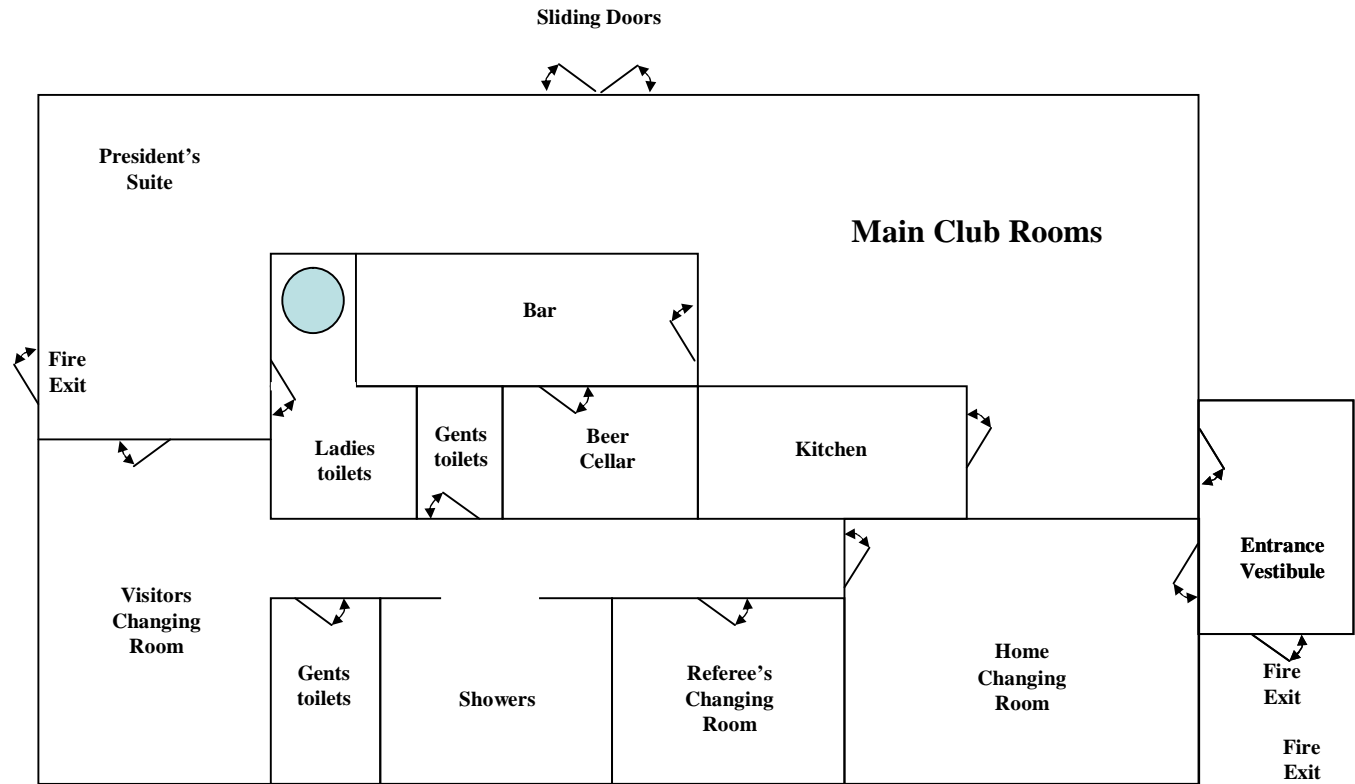
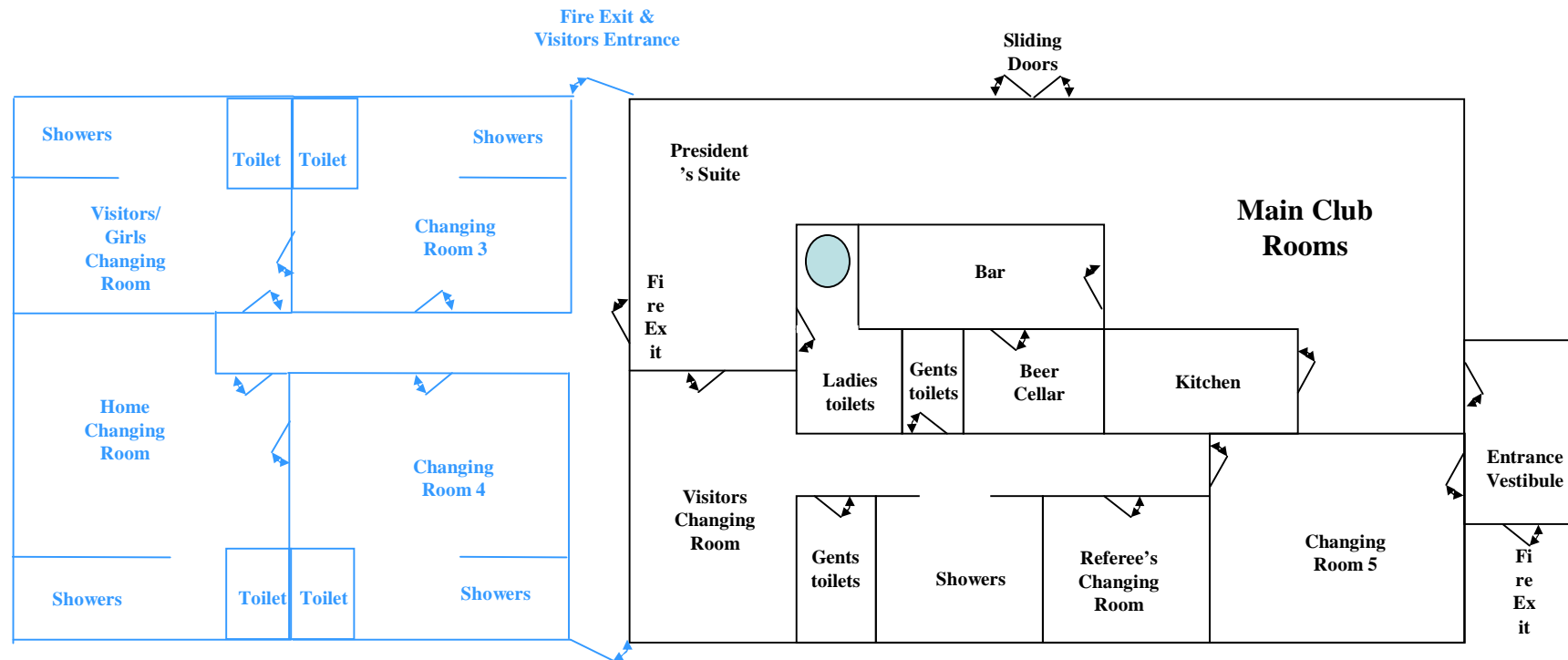


# Current Layout



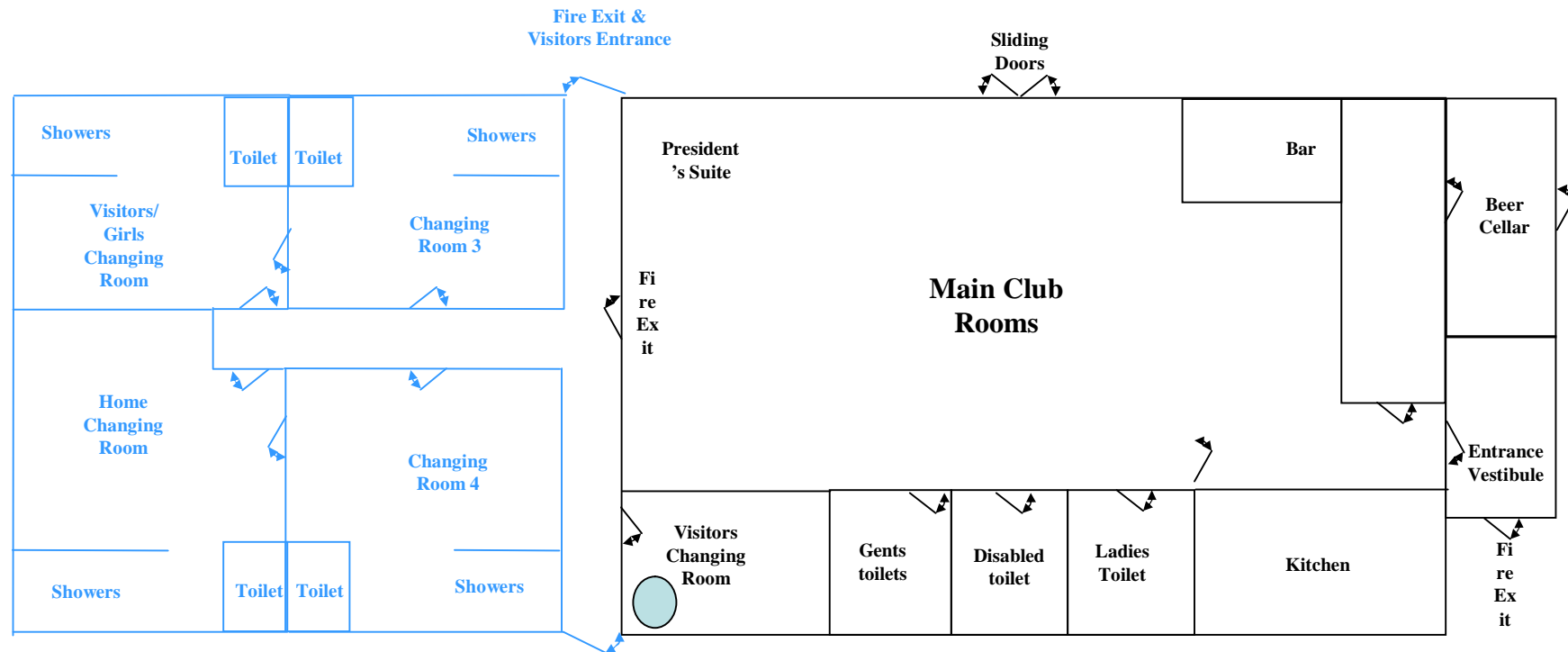
# Post Phase 1 Layout



## Key Changes:

- Four new changing rooms (~18 people)
- En-suite shower and Toilet

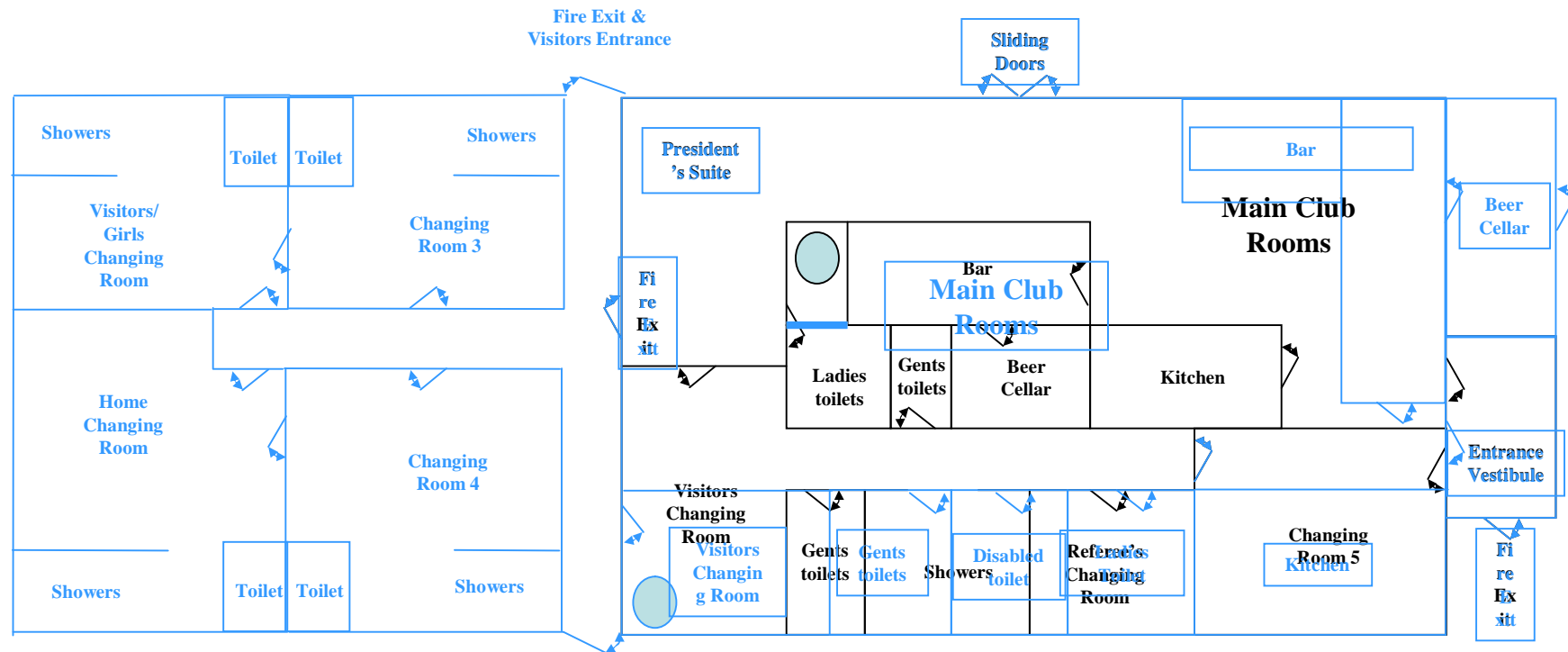
# Post Phase 2 Layout



## Key Changes:

- Four new changing rooms (~18people)
- En-suite shower and Toilets
- Removal and relocation of internal walls
- Relocation of Bar
- Construction of beer cellar

# Phase 1 & 2 Overlay



## Key Changes:

- Four new changing rooms (~18people)
- En-suite shower and Toilet